

Buzzing into Spring

[View this email in your browser](#)



Ottauquechee Natural Resources Conservation District



A Field Guide to April in Vermont - [HERE](#)

TRASH OR TREASURE ??

On Saturday, April 23 Sustainable Woodstock will be hosting a community recycling event for items that are not readily recyclable but have a value to someone - everything from printer cartridges to



bubble wrap. Anyone can participate for someone else's trash may be your treasure! A shredder and electronics recycling, also. For more information contact [Sally](#) or call 457-2911.

Woodlands for Wildlife
May 20-22 - Plymouth, VT
FREE

classroom and field studies taught by a variety of professionals to help you improve your woodland for wildlife -[MORE](#)



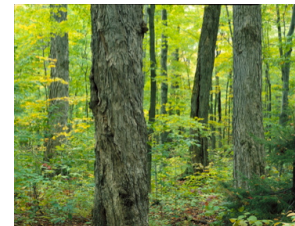
Forestry & Wildlife - Did you miss it?
View the entire presentation [here](#) !

**Forests and Wildlife: Forest Health & Management, New
Safeguards for VT's Most Vulnerable Animal & Plant Species**

Forest Planning Bill [H.789](#)

Forest related bills [H.852](#) and [H.857](#)

Species Safeguards [H.552](#)



Black River Action Team

Upcoming events

April 16 - 9-12 - Storm Water Expo- 390 RT 106 Springfield, VT [MORE INFO](#)

April 21 - 7-8:30 PM - Work with Nature's Water Cycles - Fletcher Memorial Library,
Ludlow, VT. [MORE INFO](#)

How does the Connecticut River compare to the other great rivers of New England?

A Tale of Three Rivers



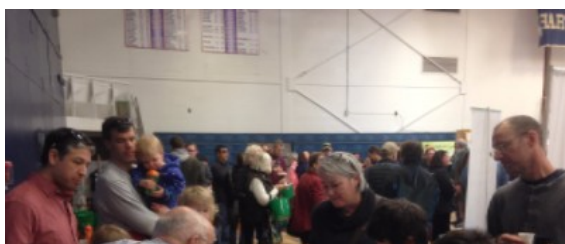
It's WOOD FROG season in Vermont

The distinctive "barking" of wood frogs in vernal pools is a sure sign of Spring.

Learn more [HERE](#)

A Bridgewater resident caught this bobcat on camera on April 12. !

(photo by Phoebe Standish)

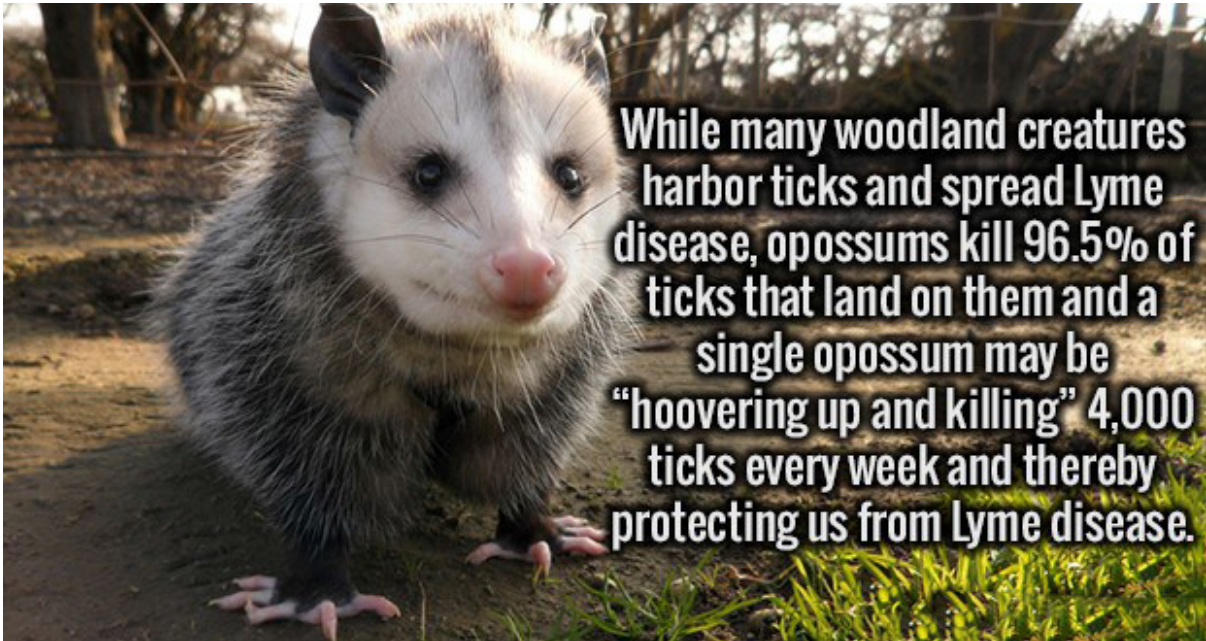


Flavors of the Valley - April 10, 2016

ONRCD had the River Roadshow on display in order to demonstrate how rivers & streams work. People learned why rivers are not straight what happens



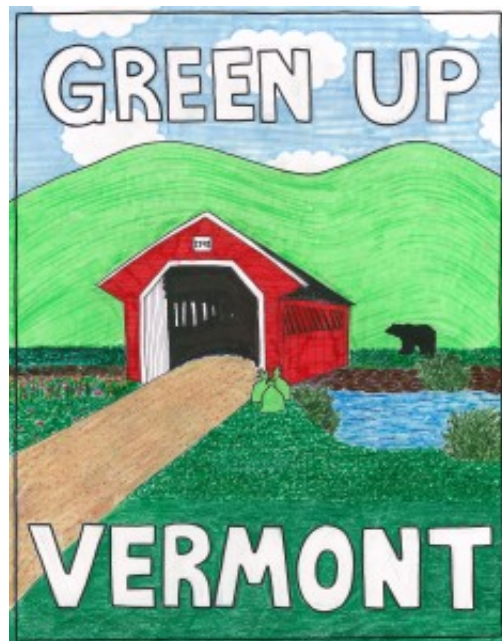
ivers are not straight, what happens during a rain event and how culvert size plays a big part in flooding and erosion. This educational tool is available to schools and events. Contact [ONRCD](#)



Possums - The Unsung Hero of Lyme Disease - [READ MORE](#)



Plantains - the GOOD weed - [MORE](#)



May 7

Find how to participate [here](#)





Maple Syrup Pie - [Here](#)

You Say Tree Hugger Like It's A Bad Thing -[read here](#)



Plants treated with neonicotinoids could harm bee colonies - [MORE](#)



Missed it? See it on-line [HERE](#)

Share Tweet

Forward





Copyright © 2016 Ottauquechee Natural Resources Conservation District, All rights reserved.
You are receiving this email because you attended one or more ONRCD workshops or meetings and gave us your e-mail address. We appreciate being able to use this form of communication rather than use paper which adds to the environment.

Our mailing address is:

Ottawuechee Natural Resources Conservation District
28 Farmvu Drive
White River Junction, Vermont 05001

[Add us to your address book](#)

Want to change how you receive these emails?
You can [update your preferences](#) or [unsubscribe from this list](#)

MailChimp